



This product is available through:  
**JRT** Associates  
 800-221-0111

**UNMATCHED  
 SOLUTIONS  
 FOR QUALITY  
 CONTROL**

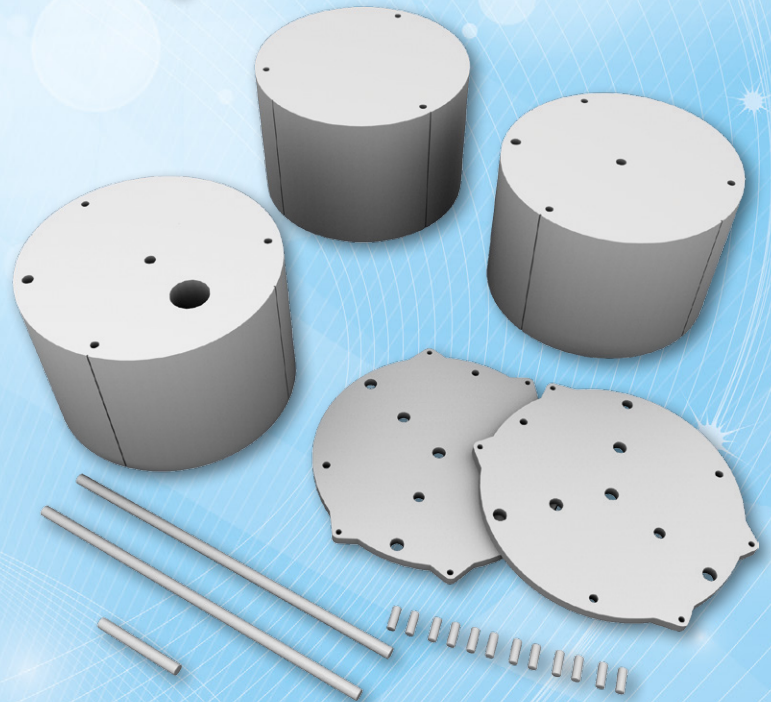
## Pro-CT Dose AAPM TG-200 Pro-CT Dose ICRU 87



**Official Supplier  
 of CT phantoms  
 to AAPM**

This phantom is **designed according to ICRU 87 report and AAPM TG-200 specifications.**

The phantom comprises high-density polyethylene (mass density of 0.97 g/cm<sup>3</sup>) and is 300 mm in diameter. The total length of the phantom is 600 mm. **This allows to capture the majority of the scattered radiation and gives more accurate results than standard PMMA cylinders – 150 mm long, 320 mm in diameter.** Due to the large mass of the phantom, it is manufactured in three separate sections. In order to keep these sections aligned, alignment pegs are included in the design.



### Technical data (can be modified to customer specifications):

- total dimensions: diameter 300 mm, length 600 mm
- made of high-density polyethylene
- build of 3 separate 200 mm sections:
  - cable section (A) contains three holes  $\varnothing 13.1$  mm where detector cable rests during measurements
  - functional section (B) contains three holes  $\varnothing 13.1$  mm for positioning CT detector and  $\varnothing 44.45$  mm, 50.8 mm deep hole for MTF (modular transfer function) calculation
  - blank section (C) is free of any structures that can be used for noise power spectrum (NPS) evaluation
- 2 x 12 mm thick polyethylene end cup to keep all modules together
- 2 x 420 mm long polyethylene filler plug to fill unused holes
- additional polyethylene rod to help center the probe tip in the middle section
- 12 x locating plug to help in correct phantom assembly
- engraved markings on phantoms for easier positioning
- carrying case with a trolley

### Product features:

- complies with:
  - ICRU report 87
  - AAPM TG-200
- CE certified
- the Manual provides detailed guidelines for carrying out each test, results assessment and registration

